

Network Video Recorder

Version: V4.71.005 build220524

Release Note

Firmware Basic Information	Firmware Version:	V4.71.005 build220524
	SDK Version:	V6.1.8.25_build20211110
	Play Library:	7.3.5.0
	Web component:	V4.0.1 build 220325
	OpenSDK Version:	V2.7.0 build 201014

Reason of Upgrade

Fix known defects and optimize product performance.

New Features

Auto NVR2.0 Configure

HDD: If there is an unformatted hard disk connected, a pop-up window will remind the user to format the hard disk. This HDD item will keep unconfigured if the user cancel it. When there's no hard disk connected or status of HDD is normal, it will show unconfigured.

Time: Unconfigured by default;

Hik-Connect: Unconfigured by default;

Resetting Password

1 configured method: Security Question

Email Hik-Connect **Security Question**

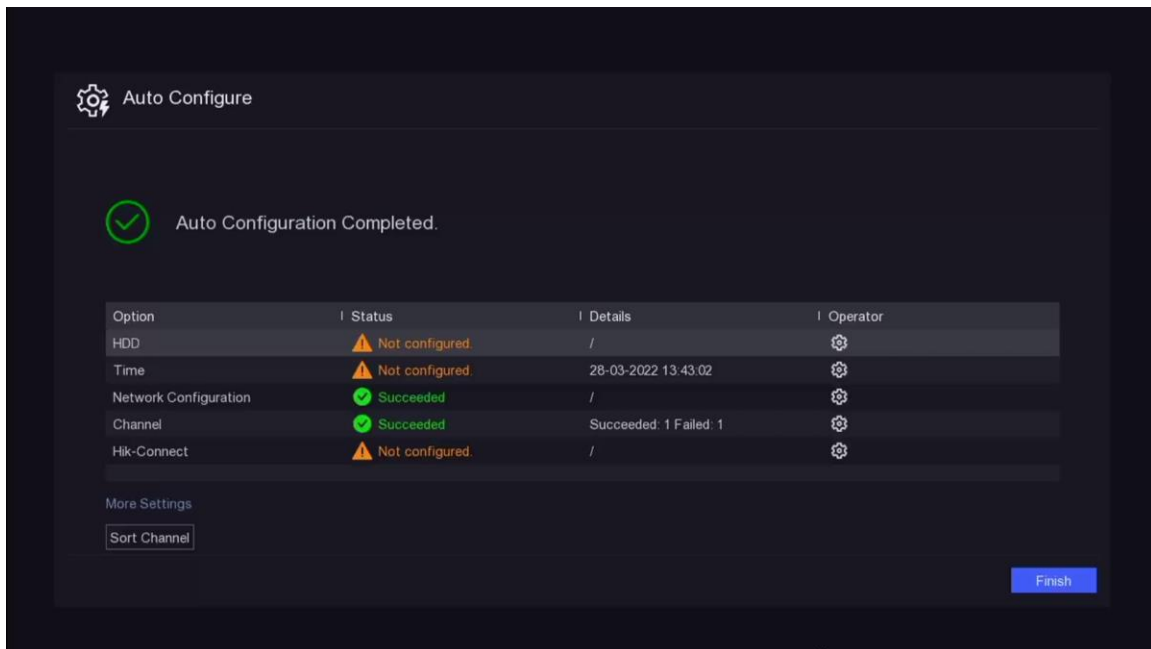
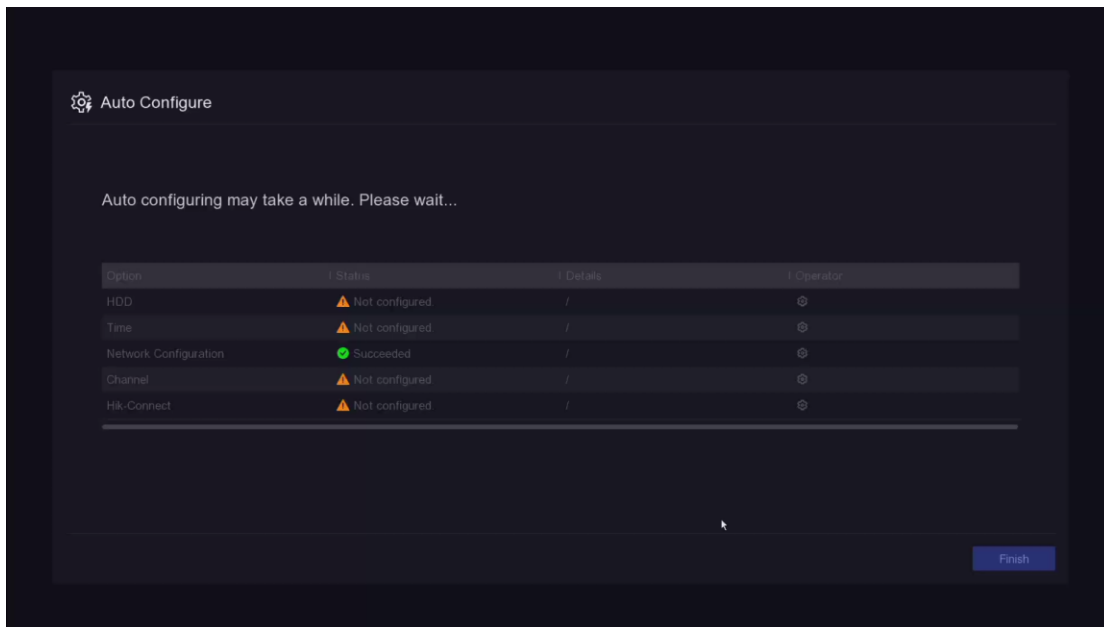
1. Your father's name. ▾
1

2. Your mother's name. ▾
1

3. Your senior class teacher's name. ▾
1

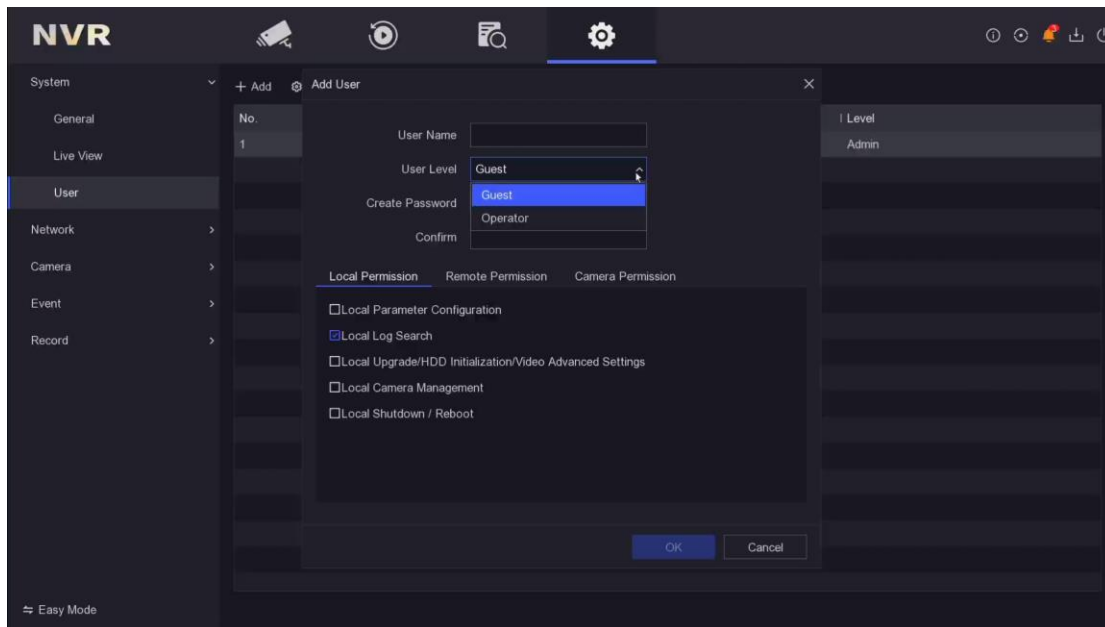
Apply

Manual Configure **Auto**



Support Adding User on local EUI and configure permission

You can select Guest or Operator when you Add User. You can configure Local Permission, Remote Permission and Camera Permission on Local EUI.



Support upgrading the connected IP cameras through the NVR

There are two ways to upgrade the connected IP cameras in Local EUI: Online Upgrade and Local Upgrade. You can also upgrade in Web, iVMS-4200 and Hik-ProConnect.

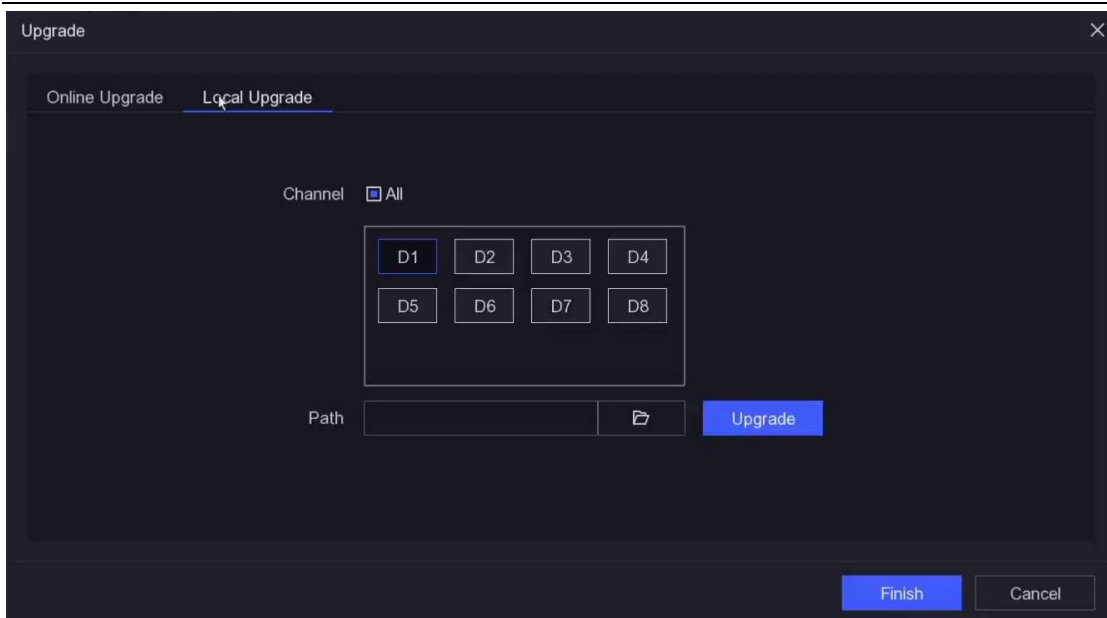
Local EUI:

The screenshot shows the NVR web interface with the 'Added Device List' table. The table has columns for Camera No., IP Address, Camera Name, Status, Protocol, Operation, and Security. Camera D1 is highlighted, and its 'Upgrade' button is circled in red.

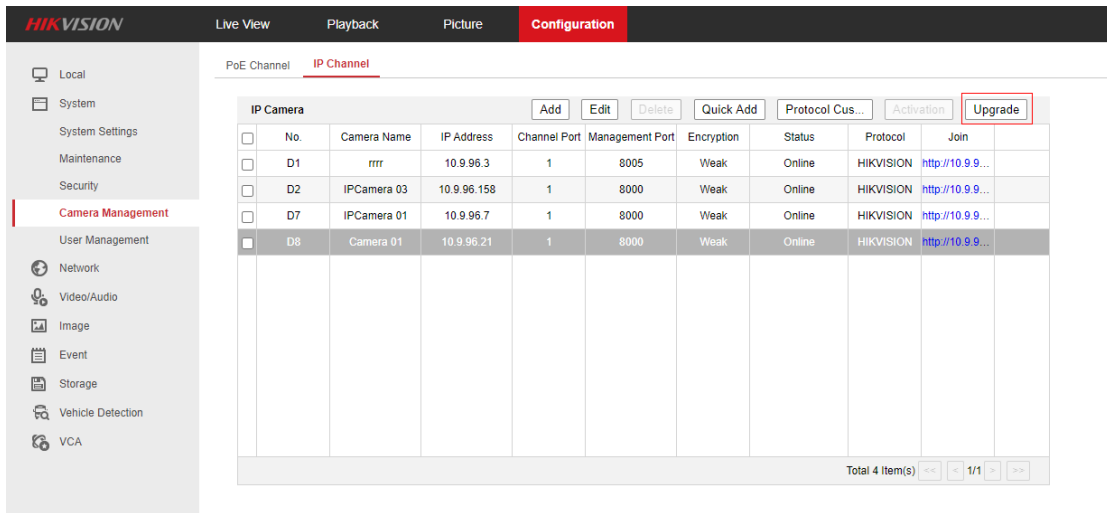
Camera No.	IP Address	Camera Name	Status	Protocol	Operation	Security
D1	10.9.96.3	rrrr	●	HIKVISION	⊙ ↗ 🗑️ 🔄	Weak Passw
D2	10.9.96.158	IPCamera 03	●	HIKVISION	⊙ ↗ 🗑️ 🔄	Weak Passw
D7	10.9.96.7	IPCamera 01	●	HIKVISION	⊙ ↗ 🗑️ 🔄	Weak Passw
D8	10.9.96.21	Camera 01	●	HIKVISION	⊙ ↗ 🗑️ 🔄	Weak Passw

The screenshot shows the 'Upgrade' dialog box with the 'Local Upgrade' tab selected. It displays a table with columns for Channel, Current Version, Latest Version, Update Status, and Operation. The 'Operation' column contains 'Upgrade' links for each camera.

Channel	Current Version	Latest Version	Update Status	Operation
D1	V5.5.26 build 200624	-	-	The version i... Upgrade
D2	V5.4.5 build 170302	-	-	The version i... Upgrade
D7	V5.4.9 build 170929	-	-	The version i... Upgrade
D8	V5.5.800 build 211009	-	-	The version i... Upgrade



Web:



Upgrade

Online Upgrade

One click upgrade Detect updates

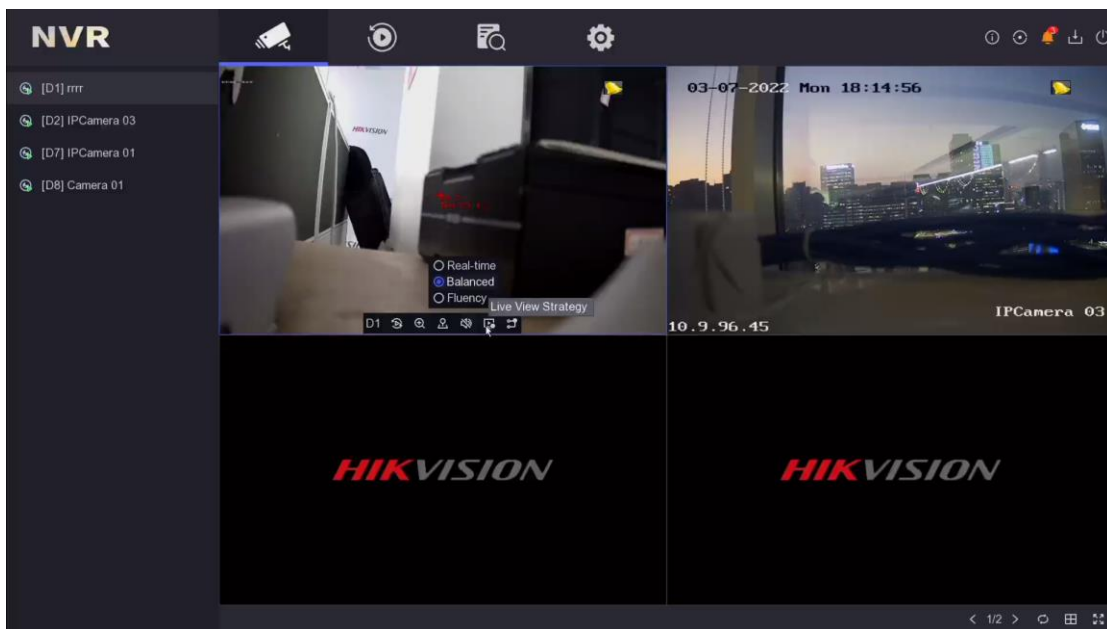
No.	Device Model	Current Version	Latest Version	Update status	Operation
D1	DS-2TD2636B-15/P	V5.5.26 build 200624	-	Is the latest version	-
D2	DS-2CD4A26FWD-IZHS	V5.4.5 build 170302	-	Is the latest version	-
D7	DS-2PT9122BX-D/S	V5.4.9 build 170929	-	Is the latest version	-
D8	DS-2CD3646G2/P-IZS	V5.5.800 build 211009	-	Is the latest version	-

Total 4 item(s) Items/Page 50 Item(s) Prev Page 1 Next Page Go to Page Go to

OK

Support Live view Strategy on Local EUI

You can change Live View Strategy to Real-time or Balanced or Fluency.



Add hardware information display

You can get hardware information from Local EUI and Web.

The format is XX-XX-XX-XX. This is divided into four character areas. Each character area are separated by "-", for example: B-R-K51-00

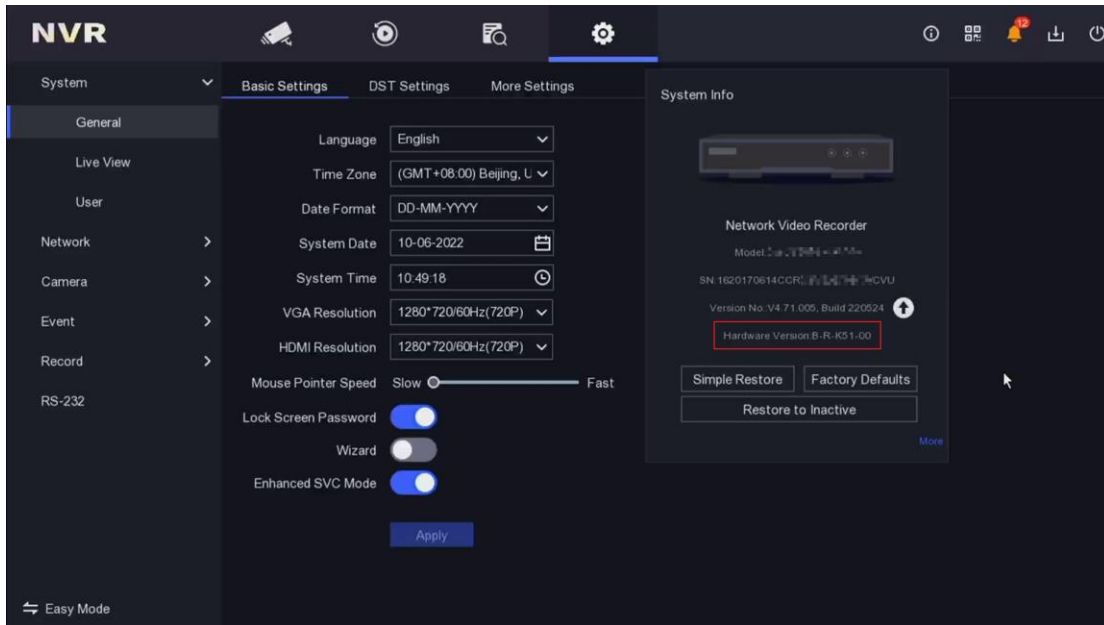
The first character area is 1 bit, distinguishing the baseline and customization: B-baseline product, C-customized product.

The second character area is 1 bit to distinguish whether it is an issue ticket firmware: R-non-issue ticket firmware, F- issue ticket fixed firmware.

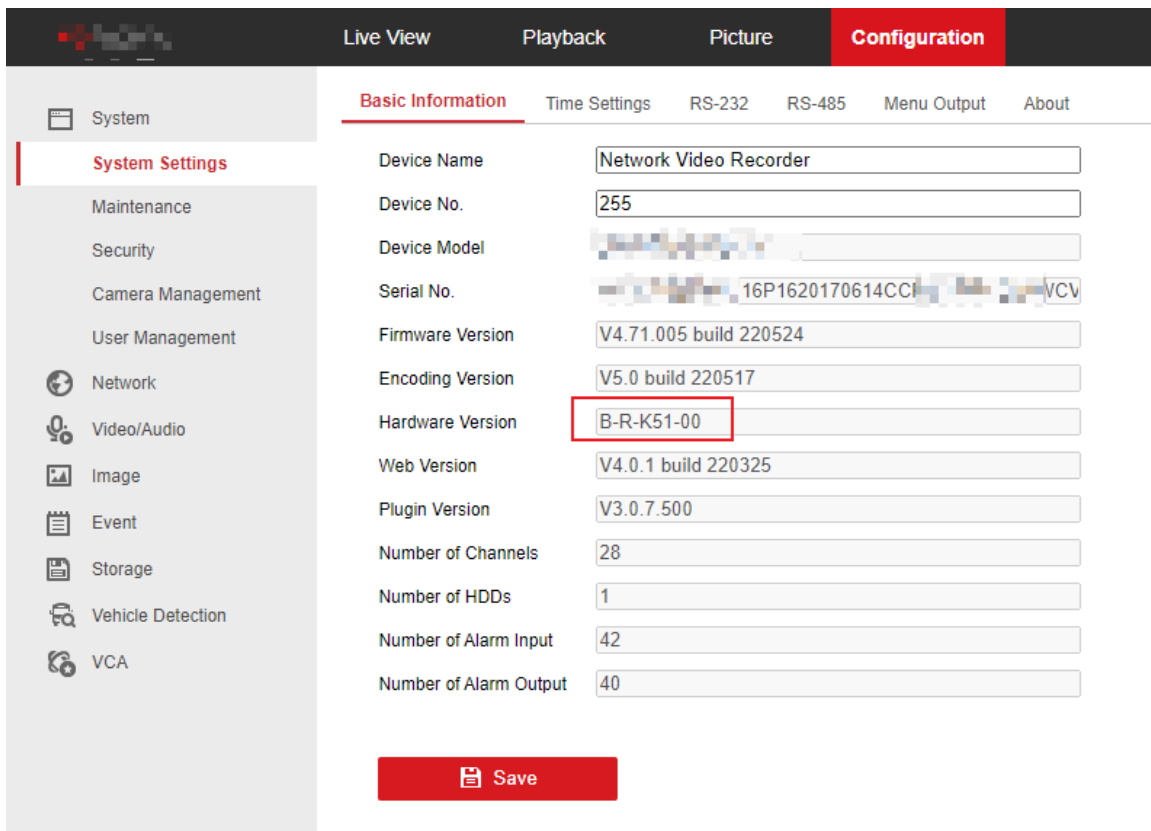
The third character area should not exceed 28 characters, distinguish the platform and 1 subcontracting information: K51_KT2, X50, K20B2_E (overseas Asian subcontracting)...

The 4th character area is 2 digits, area extension digits: 2 digits in hexadecimal, range 00-FF. The first 0 is the prototype machine, 1 is the derivative machine, this version is not implemented, reserved. Second place reserved.

Local EUI:



Web:



Support displaying stitching cameras in original scale

For cameras with special resolutions such as stitching cameras, the screen will display in original scale by default.

Support configuring cloud storage function on HikProConnect

Support configuring cloud storage function on HikProConnect.

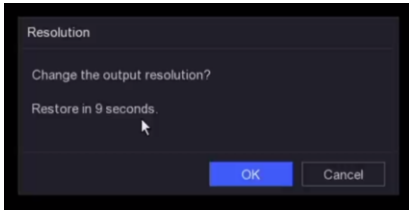
Modified functions

Live view streaming strategy and related tips optimization

1. On the basis of the original live view strategy, add the function of saving the current window stream type;
2. When the sub-stream cannot be live view, it will prompt " Sub-stream Abnormal";
3. When live view the main stream, if the decoding resources are insufficient, the user will be prompted to switch to the sub-stream; after switching the sub-stream, if the resources are still insufficient, the user will be prompted to modify the resolution of the sub-stream;

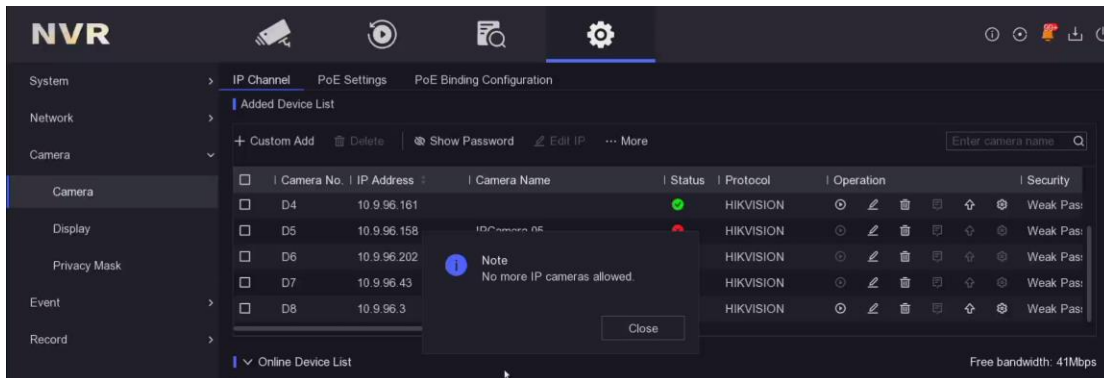
Twice confirmation modification for the resolution of the local interface

After switching the output resolution of the local interface, a pop-up window will prompt the user to confirm again. The pop-up window counts down for 15 seconds. If the user does not confirm the output resolution, the output resolution will be restored to the original resolution.



All channels of the camera are added by default when adding a multi-channels camera

1. When adding a multi-channels camera to the local EUI, all channels of the camera are added by default;
2. When adding with one click, the channels will be added in channel orders. When the channels exceed the upper limit or the bandwidth reaches the upper limit, the remaining channels of the camera will not be added, and a prompt "No more IP cameras allowed."



Default parameter modification when IP Cameras connected

Function	original logic	Modified logic
Alarm Arming Time	1. Forcibly modify the arming of the IP Cameras	1. Except for motion detection alarm, other alarm types not enable the

	<p>alarm event to 7*24 hours each time it is reconnected;</p> <p>2. Open the notify surveillance center of IP Cameras;</p>	<p>notify surveillance center;</p> <p>2. The default arming time on the device side is 7*24 hours, and the first connection is synchronized to the IP Cameras; every time the alarm configuration is set, the arming time is synchronized to the IP Cameras;</p> <p>3. IP Cameras reconnection is not synchronized with the arming time;</p>
--	----------------------------------------------------------------------------------------------------------------------------	----------------------------------------------------------------------------------------------------------------------------------------------------------------------------------------------------------------------------------------------------------------------------------------------------------------------------------------------

Related product list:

K series NVR	<p>DS-76xxNI-K2</p> <p>DS-76xxNI-K2/xP</p> <p>DS-77xxNI-K4</p> <p>DS-77xxNI-K4/xP</p>
--------------	---------------------------------------------------------------------------------------

Customer Impact and Recommended Action

This new firmware upgrade is to improve product performance, and will take effect automatically after upgrading from previous versions. We'd like to inform you the above changes. Also, we are sorry for any possible inconvenience of use-habit changes caused by this action.

Note:

- Hikvision has all rights to alter, modify and cancel this notice.
- Hikvision doesn't give any guarantee for old models' stock.
- Hikvision is not liable for any typing or printing errors.
- For special model's change details, please contact our local technical support team.